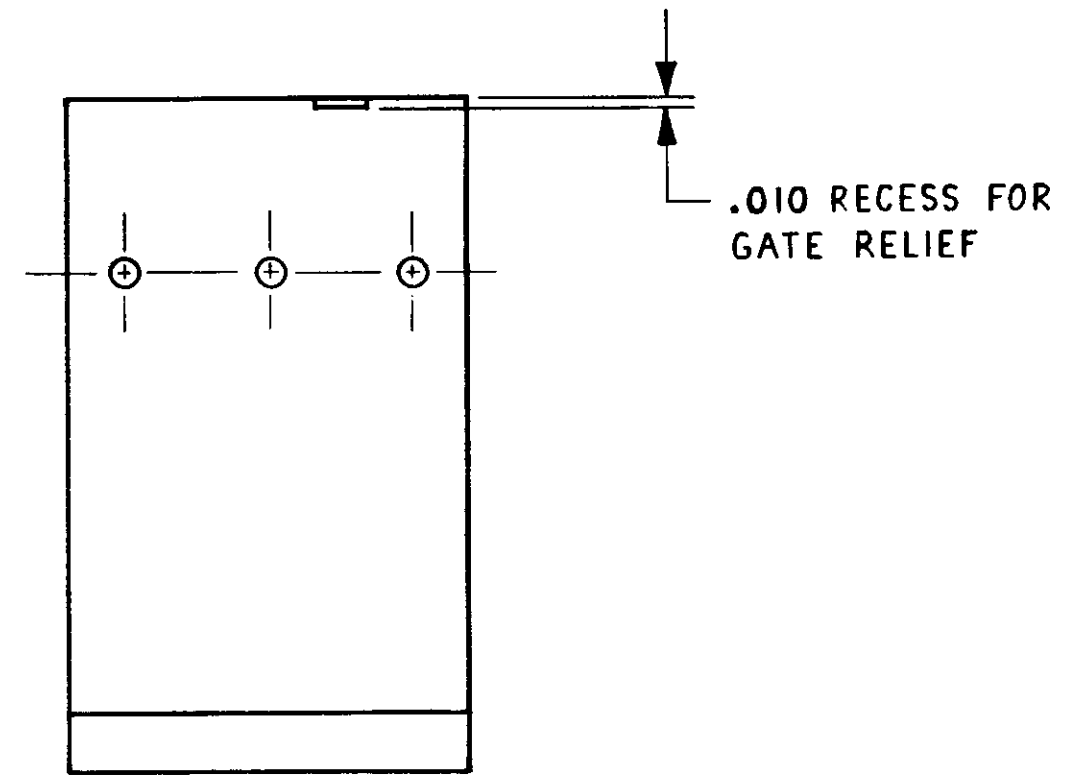
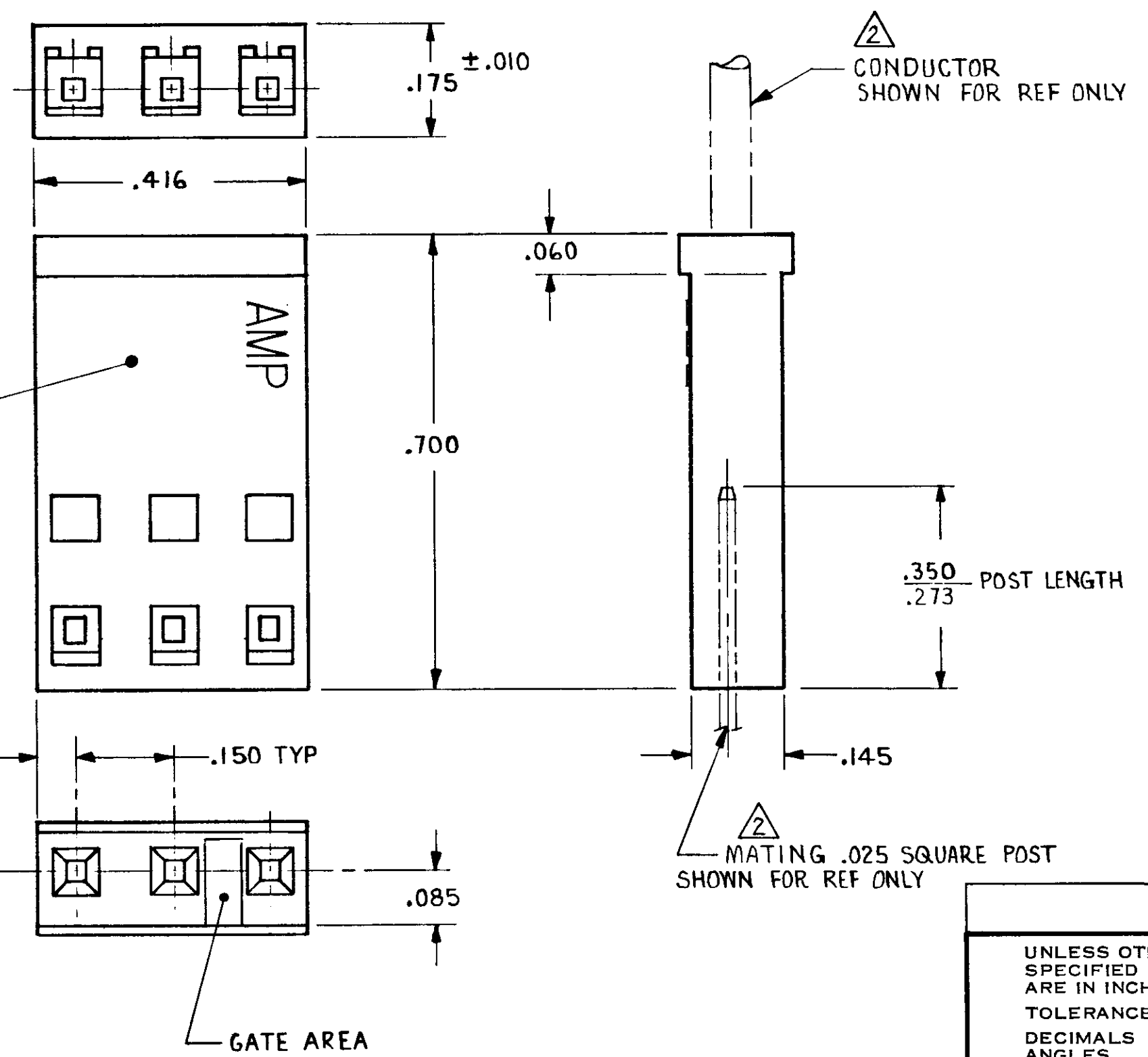


THIS DRAWING IS UNPUBLISHED. RELEASED FOR PUBLICATION, 19
 © COPYRIGHT 19 BY AMP INCORPORATED, HARRISBURG, PA. ALL INTERNATIONAL RIGHTS RESERVED. AMP PRODUCTS MAY BE COVERED BY U.S. AND FOREIGN PATENTS AND/OR PATENTS PENDING.

REVISIONS						
P	F	ZONE	LTR	DESCRIPTION	DATE	APPROVED
	✓		0	RELEASED, NPR 1669, WAS 5407-15001-1	6-2-86	J.P.
	✓		A	MOVEL GATE LOC ECN 53498	9-29-86	J.S.
	✓		B	REVISED ECN 53690	12-11-86	R.B.
C	✓		C	ECN AR2049	7/1/88	M.A.
	✓		D	REV LOC & DIST AD-4171	11-29-89	B.F.



1. HOUSING ACCEPTS LOCKING CLIP CONTACT PART NUMBERS 87124, 87165, 87190 & 87191.
 2. PRODUCT INSTRUCTION: PULL ON HOUSING TO REMOVE FROM POSTS. DO NOT CONFINE CONDUCTORS OR PULL ON CONDUCTORS DURING REMOVAL ACTION.



868781-1
PART NO

UNLESS OTHERWISE SPECIFIED DIMENSIONS ARE IN INCHES. TOLERANCES ON: DECIMALS ±.005 ANGLES ±	CONTRACT NO		AMP INCORPORATED Harrisburg, Pa. 17105	
	DR <i>R. Stone 6-2-86</i>	NAME HOUSING, LOCKING CLIP, .025 SQUARE POST, .150 &		
MATERIAL BLACK, POLYESTER, GLASS FILLED	CHK <i>Don Stone 6-6-86</i>	APPD <i>Don Stone 6-6-86</i>	SIZE C	FSCM NO 00779
	FINISH		DRAWING NO 868781	DRAWING NO
OTHER APPD		SCALE 5:1	SHEET 1 OF 1	